

ATLAS MRL

Traction Gearless
MRL Lift

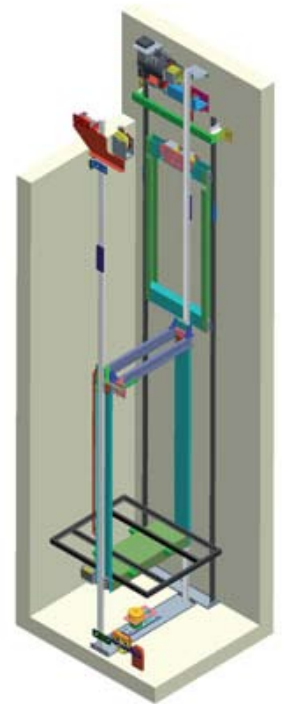


ATLAS MRL

ATLAS MRL is the ideal traction Machine Roomless (MRL) solution for rated loads up to 5000 kg. It is equipped with a premium quality gearless motor and a state of the art inverter that lead to an outstanding ride quality, eliminate noise and achieve very low energy consumption. Furthermore, all lift components are cleverly designed to achieve efficient use of space inside the shaft as well as ease of installation and maintenance.

Advantages

- Wide range of application (from 300 kg / 4 persons up to 5000 kg / 66 persons)
- Premium ride quality through state of the art technology
- High energy efficiency (especially for high-rise buildings)
- Ease of installation
- Minimal requirements for pit and headroom dimensions (Atlas 2:1 RPH)
- Type Examination Certificate according to Directive 95/16EC and in compliance with EN81.1/A2, prEN 81.A3 and EN 81.21



Atlas 2:1 RPH

Technical specifications

	Atlas 2:1 RPH						Atlas Basic	
Range of use	Atlas 2:1 & 1:1							
Rated Load	300 kg	375 kg	450 kg	630 kg	750 kg	1000 kg ⁽²⁾⁽⁴⁾ / 1050 kg ⁽¹⁾		
Persons	4	5	6	8	10	13 ⁽²⁾⁽⁴⁾ / 14 ⁽¹⁾		
Roping	1:1 or 2:1							
Max Travel (m) *	30 ⁽⁴⁾ / 45 m ⁽²⁾⁽³⁾ / 70 m ⁽¹⁾							
Max Number of Stops *	11 ⁽⁴⁾ / 16 ⁽²⁾⁽³⁾ / 24 ⁽¹⁾							
Max Speed (m/sec) *	1.6 m/sec ⁽¹⁾⁽²⁾ / 1.0 m/sec ⁽³⁾⁽⁴⁾							
Min Pit Depth (mm)	370 mm ⁽³⁾ / 1200 mm ⁽²⁾⁽⁴⁾ / 1300 mm ⁽¹⁾							
Min Headroom (mm)	2900 mm ⁽³⁾ / 3450 mm ⁽²⁾⁽⁴⁾ / 3600 mm ⁽¹⁾							
Cabin Guide Rails	T75x62x10 ⁽²⁾⁽³⁾⁽⁴⁾ / T89x62x16 ⁽¹⁾					T89x62x16 ⁽²⁾⁽³⁾⁽⁴⁾ / T90x75x16 ⁽¹⁾		
Counterweight Guide Rails	T50x50x5							
Vertical Distance Between Guide Brackets (vDBG) (mm)	1500 mm ⁽¹⁾ / 2000 mm ⁽²⁾⁽³⁾⁽⁴⁾							
Number & Diameter of Ropes	12 x Φ 4 ⁽³⁾ / 6 x Φ 6.5 ⁽²⁾⁽⁴⁾ / 6 x Φ 8 ⁽¹⁾					8x Φ 6.5 ⁽²⁾⁽³⁾⁽⁴⁾ / 8x Φ 10 ⁽¹⁾		
Max Number of Cabin Doors	2 ⁽²⁾⁽³⁾⁽⁴⁾ / 3 ⁽¹⁾							
Motor Type	Gearless, VVVF, Permanent Magnet,							

(1) Atlas 1:1

(2) Atlas 2:1

(3) Atlas 2:1 RPH

(4) Atlas Basic

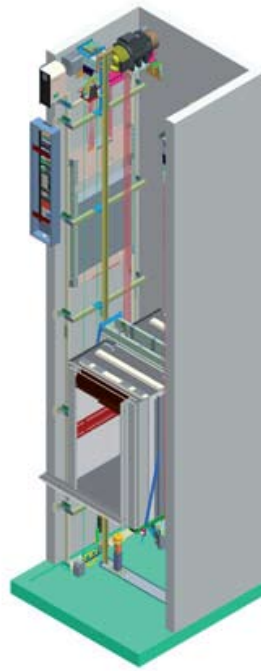
* Maximum car travel, number of stops & car speed may exceed the respective figures. Contact us for further details.



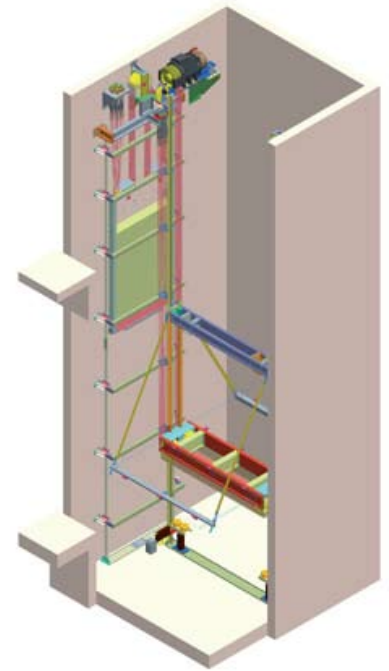
Atlas 1:1



Atlas 2:1
Atlas Basic



Atlas Gigas



Atlas Super Gigas

Atlas Gigas					Atlas Super Gigas				
1275 kg	1600 kg	1800 kg	2000 kg	2500 kg	3000 kg	3500 kg	4000 kg	4500 kg	5000 kg
17	21	24	26	33	40	46	53	60	66
2:1					4:1				
45 m					45 m				
16					16				
1.6 m/sec					1.0 m/sec				
1200 mm					1400 mm				
3450 mm					3800 mm				
T125x82x16					T125x82x16				
T70x70x9 or T89x62x16					T70x70x9 or T75x62x10				
2000 mm					2000 mm				
6 x Ø 10	7 x Ø 10	8 x Ø 10			8 x Ø 10			10 x Ø 10	
2					2				
Closed Loop with Inverter									

KLEEMANN SOLUTIONS

COMPLETE LIFT SYSTEMS

- Machine Room Hydraulic/Traction Systems
- Machine Room Less Hydraulic/Traction Systems
- MaisonLIFT PLUS
- MaisonLIFT BASIC, according to machine directive
- Earthquake Resistant Lift
- Compact, Dumbwaiter

LIFT ASSEMBLIES

- **Cabins**
 - Passenger Cabins
 - Freight/Goods Cabins
 - Firefighting Cabins
 - Panoramic Cabins
- **Doors**
 - Automatic Doors with VVVF Operator
 - Folding Doors
 - Semi-automatic Landing Doors
 - Circular Doors
 - Modernization Doors
- **Electronics**
 - Controllers
 - Car & Landing Operating Panels
 - Pre-wiring
- **Hydraulic Elevation Systems**
 - Piston & Cylinder Assembly
 - Power Units
 - Car Frames
 - Guide Rails
 - Wire Ropes
 - Hydraulic Oil
- **Traction Elevation Systems**
 - Traction Machines
 - Car Slings
 - Counterweight Slings
 - Governors
 - Guide Rails
 - Wire Ropes

COMPLETE ELEVATION SYSTEMS

- **KleemannPark**
 - Parking and Car Lifting
- **Freestair**
 - Chair or Platform Stair Lifting Systems
- Escalators and Moving Walks