

# ATLAS MRL Super Gigas Traction Lift



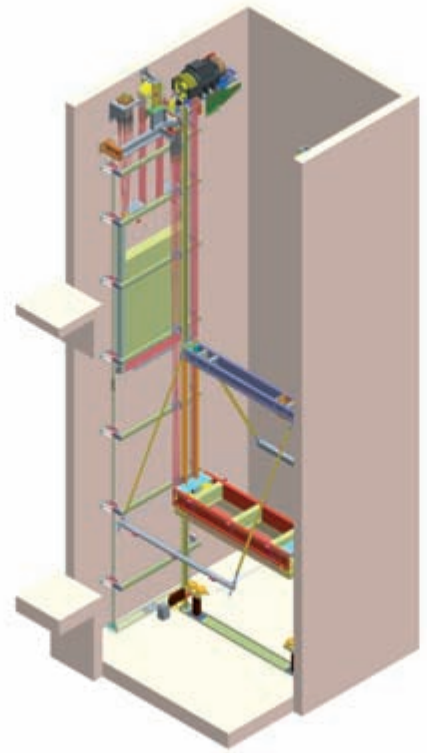
## ATLAS Super Gigas

Atlas Super Gigas is the ideal traction Machine Roomless (MRL) solution for rated load up to 5000 kg. It is equipped with a premium quality permanent magnet gearless machine manufactured by a renowned company in the field.

All lift components are designed in a way that combines ease of installation with maximum performance and low noise levels of a gearless machine.

### Features / Advantages

- Rated load up to 5000 kg
- Travel up to 45 m
- Speed up to 1.0 m/s
- Min pit 1400 mm
- Min headroom 3800 mm
- High performance with minimum energy consumption (Gearless, synchronous, permanent magnet, closed loop, VVVF traction machine)
- Ease of installation
- Comply with EN 81.1 / A2
- Guarantee and technical support by KLEEMANN



Technical Specifications					
Rated Load	3000 Kg	3500 Kg	4000 Kg	4500 Kg	5000 Kg
Roping	4:1				
Max Travel	45 m (*)				
Number of stops	16				
Max Car speed	1.0 m/s				
Min Pit	1400 mm				
Min Headroom	3800 mm (for external car height: 2460 mm) 3900 mm (for external car height: 2560 mm) 4000 mm (for external car height: 2660 mm) 4100 mm (for external car height: 2760 mm)				
Max Car frame weight	750 Kg				
Max Suspended Load	7600 Kg				
Car guides DBG	min= 2000 mm max= 2700 mm				
Car Width	[=DBG-300] min=1700 mm max= 2400 mm				
Car Depth	min= 2700 mm max= 4200 mm				
Car guides rails Cwt guide rails	T125x82x16 T 70 x 70 x 9 or T 75 x 62 x 10				
Max Vertical distance btw brackets	2000 mm				
Ropes (type)	Φ10 mm - 250T (67.7kN)				
Ropes Qty	8	8	8	10	10
Motor	VVVF, gearless, synchronous, permanent magnet, closed loop				

\* For travel length>45 m, please contact our sales department

KL 1-ATLSG-ENG 09/09